

Natural Gas -

These shutoffs are located at the meter. It is best to have a wrench that is tethered to the meter, so you know it is there when you need it. If you have propane tanks have shut off valves at the lines connecting them to the home or appliance.



If you ever smell a strong odor of gas (rotten egg smell) shut off the gas immediately, turn off the electricity (this can prevent explosions or fire) and open all the doors and windows. Call 911 for the fire department and the gas company to locate and isolate the gas leak.

Electricity -

You should know how to turn off the power to your home. Usually there is a main shutoff in the breaker panel or at the power meter. Occasionally there is no single main shutoff, in this case, turn off every breaker in the panel.

If your home has a fuse box there will sometimes be a shut off above or beside the box. If there is no shut off, then unscrew each fuse and lay them out in the same pattern as they were in the box. This is so you can replace each fuse in the proper location and not mix up the amperages of the circuits. Most older homes have 2 or more pull out fuse holders, so remove these also.

All reports are printed **on site**
And online in minutes after your inspection

You will never have to wait for our
inspection results.

Protect Your Investment
With the **BEST**

Excellent reviews and top rankings
Bizvotes.com, Yelp.com and Angie's List



Full ASHI Certification

The oldest and most respected
home inspection association

State License # 469

Structural Pest License #71070

Certified Home Inspection Team
King, Snohomish, Thurston and Pierce Counties



(206) 295-4330

THE HOME INSPECTORS

TIP SHEET

Expert advice on homeowner's questions

EARTHQUAKE PREPAREDNESS



We all worry about Earthquakes,
use that trepidation you motivate
you to take steps to prepare

See tips and videos

On preparations and retrofits at
[HipsPro.com/earthquake-preparednes.htm](https://hipspro.com/earthquake-preparednes.htm)

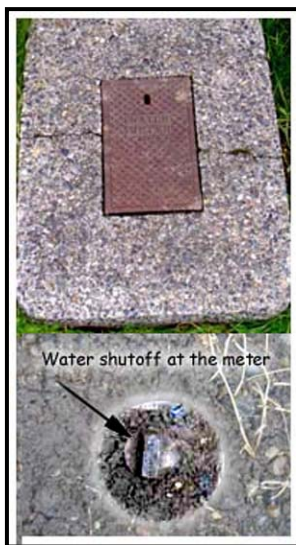
Safety - Maintenance - Repair

Utility Shut Offs -

Everyone should know where and how to turn off all utilities to your home. We will often see these shutoff locations inaccessible. Never block a gas meter shutoff valve, water shutoff or breaker panel! In an emergency you must be able to shut these off or risk fire, explosion, electrocution, serious water damage or even death.

Water -

The main shutoff for most homes is sometimes hard to find. Since these



valves are rarely used they will often leak when you turn them off. For these reasons, we recommend that you locate your main shutoff at your water meter. This valve is usually under a cover near the sidewalk or at the edge of the road. Open this cover and look for the valve, you will need a tool

to turn this off. It is important to look at yours and make sure you have the proper tool to turn off the water. Most of them can be turned with an adjustable wrench, similar to the valve on a gas line. Others may require a special tool available at your local hardware store. If you are on a well, familiarize yourself with the equipment in your pump house so you know how to turn off the pump and water valves.

Hot Water Heaters -



When there are earthquakes, water heaters will often fall over. All water heaters should be anchored to walls. These straps should be heavy steel, not flimsy 'plumbing straps'. A standard water heater can easily weigh over 400 pounds and plumbing straps are inadequate. Most people only worry

about gas powered hot water heaters, but we are concerned with all of them. An electric heater that falls over will cause a huge leaking mess not to mention the power connected is typically 20 amps 240 volts! This can easily kill anyone that comes in contact with an electrified puddle.

Structural Concerns -

Many homes suffer significant damage when they shift off their foundations or the walls that attach the home to the foundations buckle. While it is no guarantee, proper anchor bolts, shear walls, and positive post to beam connections make a home much more resistant to the movement during an earthquake.

Post to Beam Connections, Joist Hangers -

A positive connection where post meet beams and where beam meet each other is usually a very simple step, it is an inexpensive fix and all connections should have them. Many structures and decks are lacking joist hangers, again, a simple and cheap fix that can save your life and help your home survive an earthquake.

There are many other steps you can take to retrofit a home to make it more earthquake resistant. Read more on anchor bolts and shear walls at our website.

Hipspro.com/earthquake-preparednes.htm

